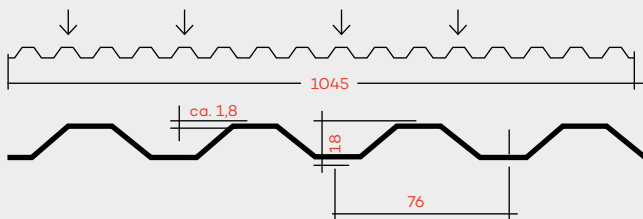


**PLEXIGLAS®**  
Trapezoidal sheet

**PLEXIGLAS® Resist TP 76/18/1,8**

**TP 76/18/1,8**

Dimensions in mm



Cross-section of PLEXIGLAS® Resist TP 76/18/1,8  
(dimensions in mm)



**Product**

PLEXIGLAS® Resist TP 76/18/1.8 is a highly light-transmitting and durably weather-resistant trapezoidal corrugated sheet made of impact-modified acrylic (polymethylmethacrylate, PMMA).

**Properties**

Besides the general properties of PLEXIGLAS® like

- Excellent light transmission and brilliance
- Outstanding weather resistance
- 100% recycling ability
- Easy to fabricate
- High surface hardness

PLEXIGLAS® Resist TP 76/18/1.8 possesses the following properties:

- They are extraordinarily UV-resistant and come with a 30-year guarantee against yellowing
- They offer excellent protection against excessive amounts of harmful UV radiation
- They are safe and easy to handle
- They are hail-resistant, with a 10-year guarantee for withstanding hailstones with an energy of 1 joule
- They are available in different colors and with different surface textures.

<sup>1</sup> Europ. Patent 149 182

<sup>2</sup> This applies to Clear PLEXIGLAS® trapezoidal corrugated sheets according to the guarantee statement.

### Applications

Due to these properties PLEXIGLAS® Resist TP 76/18/1.8 are suitable for the following applications

- Carports
- Facades
- Lampshades, decorative elements, store fixtures, exhibition booths
- Screens, Sight Screens
- Patio roofs
- Porches
- Verandas
- Windbreaks

### Processing

For PLEXIGLAS® Resist TP 76/18/1.8 the following processing guideline is available:

- Instructions for Installing PLEXIGLAS® Multi-Skin, Corrugated-and Solid Sheets (Ref-No. 311-8)

### Product range

PLEXIGLAS® Resist TP 76/18/1.8 is available in the following grades and sizes:

- Length: 2,000 to 7,000 mm
- Width: 1045mm
- Colors: Clear, Brown

For details please refer to the PLEXIGLAS® sales handbook.

### Stability and Impact Strength

PLEXIGLAS® Resist TP 76/18/1.8 sheets offer high impact strength due to their special formulation, and are easy to machine using simple tools.

### Surface Textures and Color

Owing to their different colors (Clear, Brown) and surface textures (Smooth, C-texture), PLEXIGLAS® Resist TP 76/18/1.8 sheets are ideally suited for a variety of architectural styles. The different colors and surface textures also make it possible to achieve interesting design and lighting effects.

### Installation and Care Instructions

For roofs and façades, PLEXIGLAS® Resist TP 76/18/1.8 sheets are fastened pointwise to a sufficiently dimensioned supporting structure. The textured side is installed facing downward/ inward. Given correct installation, any soiling is washed off by the rain. We nevertheless recommend you to clean the PLEXIGLAS® Resist trapezoidal corrugated sheets once a year according to our instructions, in order to maintain the quality of the roofing.

### Load-bearing capacity Support spacing

According to the installation instructions for PLEXIGLAS® corrugated sheets with pointwise fastening, the PLEXIGLAS® Resist WP 76/18/1.8 corrugated sheets require cross-members at the spacings shown in the adjacent table.

### Unterstützungsabstand

Load [N/m²]	Support spacing [m]
200	1,40
400	1,30
600	1,10
800	0,80

# PLEXIGLAS®

## Trapezoidal sheet

### Technical data (Typical values)

Available length	2000 to 7000 mm
<b>Light transmittance <math>\tau_{D65}</math></b>	
Farblos OR005 Glatt	Up to 92%
Farblos OR005 C	Up to 92%
Braun 8R002 Glatt	approx. 70%
Braun 8R002 C	approx. 65%
Coefficient of linear thermal expansion $\alpha$	0,09 mm/m <sup>2</sup> K
Possible expansion due to heat and moisture	approx. 6 mm/m
Max. service temperature without load	70 °C
Area weight	approx. 2,4 kg/m <sup>2</sup>

### Fire behavior

- PLEXIGLAS® is rated as European Class E in accordance with DIN EN 13501.
- PLEXIGLAS® burns almost entirely without smoke in accordance with DIN 4102 and is easily extinguished.
- The smoke gases formed by PLEXIGLAS® are neither acutely toxic in accordance with DIN 53436 nor corrosive according to DIN VDE 0482-267.
- Roof surfaces glazed with PLEXIGLAS® open up by melting in the event of fire, allowing smoke and heat to escape.

### Guarantee

You can find the guarantee statements on this and other products at [www.plexiglas.de](http://www.plexiglas.de)

**Röhm GmbH**  
Acrylic Products

Riedbahnstraße 70  
64331 Weiterstadt  
Germany

[www.plexiglas.de](http://www.plexiglas.de)  
[www.roehm.com](http://www.roehm.com)

® = registered trademark

PLEXIGLAS is a registered trademark of Röhm GmbH, Darmstadt, Germany.  
Certified to DIN EN ISO 9001 (Quality) and DIN EN ISO 14001 (Environment)

This information and all further technical advice is based on our present knowledge and experience. However, it implies no liability or other legal responsibility on our part, including with regard to existing third party intellectual property rights, especially patent rights. In particular, no warranty, whether express or implied, or guarantee of product properties in the legal sense is intended or implied. We reserve the right to make any changes according to technological progress or further developments.

The customer is not released from the obligation to conduct careful inspection and testing of incoming goods. Performance of the product described herein should be verified by testing, which should be carried out only by qualified experts in the sole responsibility of a customer. Reference to trade names used by other companies is neither a recommendation, nor does it imply that similar products could not be used.